



## DW601 Light Fastness Tester (Mercury Lamp)



**Application:** DW601 Light Fastness Tester (Mercury Lamp) is used to determine the light fastness of textiles which is exposed to mercury lamp.

**Related Standards:** BS 1006UK/TN.

### Parameters

Light source	500W Mercury Lamp
Distance between specimen and center of lamp	(200±5)mm
Exposure area	1800cm <sup>2</sup>
Power supply	AC220V 50Hz

## DW1410/1411 Ultraviolet Accelerated Weatherometer



DW1410



DW1411

### Parameters

Model No.	DW1410	DW1411
Light source	UV-A or UV-B	
Temperature range	RT+10°C ~70°C	
Temperature fluctuation	±1°C	
Temperature accuracy	±3°C	
Temperature resolution	0.1°C	
Humidity	≥95% RH	
Lamp space	70mm	60~70mm
Distance between samples and lamps	(50±2)mm	50~500mm, adjustable
Temperature sensor	PT-100	
Power supply	AC220V 50Hz	AC380V 50Hz

**Application:** DW1410/1411 Ultraviolet Accelerated Weatherometer is designed for a wide range of applications, such as the ageing test of non-metallic materials, organic materials (plastics, paints, coatings, rubbers, etc.) and related products on specified conditions of sunlight, temperature, humidity or/and condensation to assess the degree of color change and fade.

**Related Standards:** ISO 4892-3, ASTM D4329, ASTM D4587, ASTM D5208, etc.

## DW5610 Ozone Test Chamber



### Parameters

Temperature range	5~40°C
Temperature resolution	±0.1°C
Temperature uniformity	±2°C
Temperature fluctuation	±0.5°C
Ozone concentration	0.03~19.99ppm
Ozone deviation	≤10%
Air flow	2~25L/min
Timing range	0~999h, settable
Test chamber dimensions	500×500×600mm
Power supply	AC220V 50Hz

**Application:** DW5610 Ozone Test Chamber is used to determine the effect of exposure, under surface tensile strain conditions, either dynamic or static, in an atmosphere containing a specified level of ozone concentration and also used to determine the resistance of the color of textile in ozone atmosphere, different temperature and relative humidity.

**Related Standards:** ISO 105-G03, ASTM D1149, AATCC 109, etc.

## FY-1 Zipper Sliding Force Tester



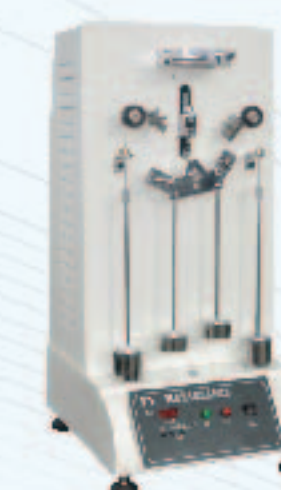
**Related Standards:** QB/T 2171, 2172, 2173, etc.

### Parameters

Load cell	30N
Accuracy of measuring force	≤±0.5%
Effective test length	80~220mm
Sliding speed	1250±50mm/min
Return speed	1250±50mm/min
Power supply	AC220V 50Hz

**Application:** FY-1 Zipper Sliding Force Tester is used to determine sliding property of slider on metal or plastic zipper.

## FY-2 Zipper Reciprocating Tester



**Related Standards:** QB/T 2171, 2172, 2173, BS 3084, etc.

### Parameters

Test cycle range	0~9999 times
Reciprocating speed	30 cycles/min
Reciprocating travel	75mm
Open-close angle	when the end of zipper is open, 30°; The end of zipper closed, 60°
Element width range	3.5mm~12mm
Gripping device width	horizontal: 25mm; vertical: 10mm
Max load range	30N
Power supply	AC220V 50Hz

**Application:** FY-2 Zipper Reciprocating Tester is used to determine the product life of metal or plastic zipper under condition of specified load of specified times of stretching cycle.

## FY-3 Zipper Slider Bursting Strength Tester



**Related Standards:** QB/T 2171, 2172, 2173, etc.

### Parameters

Load range	0-200N
Accuracy of measuring force	≤±0.1% applied load
Deformation range	0.2-2mm (programmable)
Displacement accuracy	0.01mm
Test speed	10mm/min
Power Supply	AC220V 50Hz

**Application:** FY-3 Zipper Slider Bursting Strength Tester is used to determine the bursting strength of zipper slider at specified deformation value, such as 0.5mm.

## FY-4 Zipper Slide & Puller Torsion Tester



**Related Standards:** QB/T 2171, 2172, 2173, etc.

### Parameters

Torsion range	0.1-2.5N.m
Torsion accuracy	≤±0.1% applied load
Test speed	1.5RPM
Loading direction	clockwise
Unloading direction	anti-clockwise
Torsion angle	0-300°
Power Supply	AC220V 50Hz

**Application:** FY-4 Zipper Slider & Puller Torsion Tester is used to determine the torsion strength of Zipper slider & puller.





## FY200 Series Snap Button Pullout Tester



**Application:** FY200 Series Snap Button Pullout Tester is used to determine the snap attachment strength of button which is very important to design and manufacture of garments of infants and children's wearing.

**Related Standards:** ASTM D 4846, EN71-Part1, etc.

### Parameters

Model	FY200 (Dial type)	FY200D (Digital type)
Load capacity	30kgf	200N
Load accuracy	±0.3% F.S.	±0.2% F.S.
Readability	0.1kgf	0.1N

## FY300 Button Impact Tester



**Application:** FY300 Button Impact Tester is used to determine the impact resistance of plastic sew-through flange buttons.

**Related Standards:** ASTM D5171, etc.

### Parameters

Actual drop heights	32, 44, 67, 83, 95, 117 mm
Impact ram	29.5oz

## FY036 Button Impact Tester



**Application:** FY036 Button Impact Tester is used to determine the impact resistance of buttons.

**Related Standards:** GB/T 22704, etc.

### Parameters

Button diameter range	10~30mm
Button thickness	≤5mm

## FY401 Sharp Edge Tester



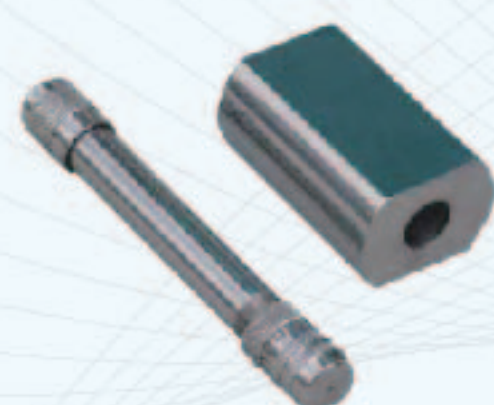
**Application:** FY401 Sharp Edge Tester is used to determine whether accessible edges on child-related products are likely to cause injury before or after use or abuse. It is applicable to child-related products for children of no more than ninety-six months.

**Related Standards:** ASTM F963, EN-71 8.2, 16 CFR 1500.48, etc.

### Parameters

Force applied	1.35lb
---------------	--------

## FY402 Sharp Point Tester



**Application:** FY402 Sharp Point Tester is used to determine whether accessible sharp points on toys are likely to cause injury. It is applicable to wood toys and child-related products for children of no more than ninety-six months.

**Related Standards:** ASTM F963 4.8, EN-71 8.14, 16 CFR 1500 4.8, etc.

### Parameters

Accessory weight	1lb, stainless steel
------------------	----------------------

## Feather and Down Filling Power Tester



DW5075



DW5076

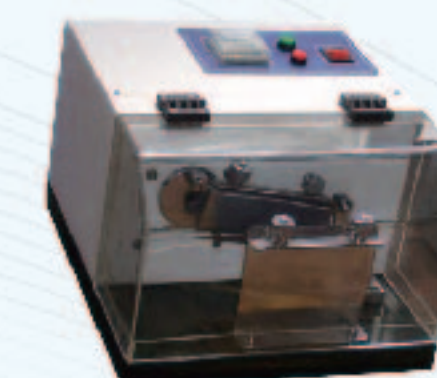
**Application:** Feather and Down Filling Power Tester is used to determine the filling power of feather and down.

**Related Standards:** GB/T 10288(DW5075), BS EN 12130, JIS L1903, IDFB-FP, etc.

### Parameters

Model No.	DW5075	DW5076
Test method	Manual	Automatic
Test cylinder height	500mm	600mm
Inner diameter of test cylinder	245mm	288mm
Weight of pressing plate	68.4g	94.25g
Airflow speed	---	3~5L/s
Power supply	---	AC220V 50Hz

## DW5070 Fabric Down-proof Tester



**Application:** DW5070 Fabric Down-proof Tester adopts rubbing method to test puncture resistance performance for winter clothes, quilt lining which fill with down or feather or both, by counting the number of materials drilled through the fabric.

**Related Standards:** BS EN 12132-1, etc.

### Parameters

Clamp spacing	44mm
Eccentric distance	25±0.5mm
Testing speed	135r/min
Sample and cushion size	(140±5)mm×(420±10)mm, 120mm×170mm
Fillings	Feather, down or both mixtures
Counter range	0~99999r, 2700r is required by BS EN 12132
Display	LED
Power supply	AC220V 50Hz

## DW5071 Fabric Down-proof Impact Tester



**Application:** DW5071 Fabric Down-proof Impact Tester adopt impact method to test puncture resistance performance for winter clothes, quilt lining which fill with fiber or feather

**Related Standards:** BS EN 12132-2, etc.

### Parameters

Angle of inclined plate	20°
Impact frequency	35rpm
Stroke	500mm
Pin size	Φ15×80mm
Counting range	0~9999
Display method	LED
Power supply	AC380V 50Hz

## YG819 Fabric Down-proof Tester



**Application:** YG819 Fabric Down-proof Tester is designed to test down-proof properties of fabrics.

**Related Standards:** GB/T 12705, FTMS191 5530, etc.

### Parameters

Rotating speed	45±1r/min
Nitrile rubber ball	140±5g, shore hardness: 45±10HA
Counting range	1~9999
Inner dimensions	450×450×450 mm
Noise	<65db
Power supply	AC220V 50Hz





## DW6149 Leather Thickness Tester



**Application:** DW6149 Leather Thickness Tester is used to test the thickness of leather.

### Parameters

Thickness measuring range	0.01~12.7mm
Thickness resolution	0.01mm
Plate foot	Φ10mm
Load	393±10gf (49.1kPa)

## DW9210 Leather Softness Tester



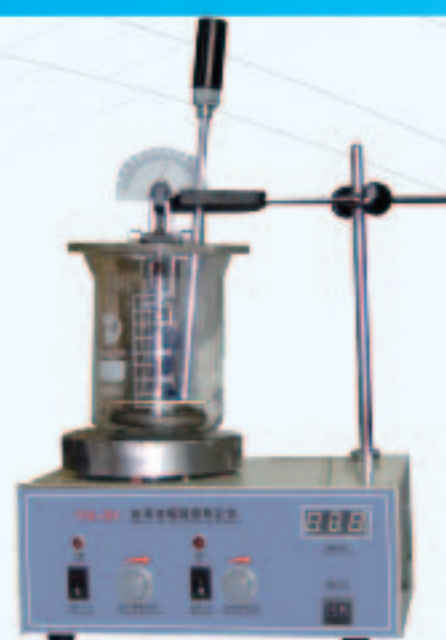
**Application:** DW9210 Leather Softness Tester is used to determine the softness of leather, coated fabric or other soft materials.

**Related Standards:** ISO 17235, IULTCS, IUP36, etc.

### Parameters

Load	(530±10)gf
Measuring range	0.1~10mm

## PS-83 Leather Contraction Temperature Tester



**Application:** PS-83 Leather Contraction Temperature Tester is used to determine the shrinkage temperature of leather heated at a specified rate in water.

**Related Standards:** ISO 3880, etc.

### Parameters

Vessel volume	500ml
Magnification	5.3
Temperature range	0~99°C, adjustable
Heating rate	2°C/min, adjustable
Power supply	AC220V 50Hz

## XGMC-II Crock Meter/Rubbing Fastness Tester



**Application:** XGMC-II Crock Meter/Rubbing Fastness Tester is used to determine the color fastness to rubbing and wear resistance test for leather and lining of shoes.

**Related Standards:** ISO 11640, etc.

### Parameters

Reciprocating travel	35mm
Weight	500g
Reciprocating speed	40rpm
Wool felt size	Square 15×15mm
Rubbing times	0~9999, settable and LED display
Power supply	AC220V 50Hz

## SC-2 COD Analyzer



### Parameters

Digestion temperature	165±2°C
Digestion time	15mins±2%
Accuracy	≤±8%
Repeatability	≤±3%
Optical stability	≤0.005A/20mins Absorbency shift≤0.005A/20mins
Power supply	AC220V 50Hz

**Application:** SC-2 COD Analyzer is widely used in water quality monitoring in environmental protection, petroleum, chemical industries, health, etc. It is applicable to analysis the COD (abbr. of Chemical Oxygen Demand) of groundwater, surface water, domestic sewage and industrial waste water.

**Related Standards:** HJ/T 399, etc.

## CI-B5 BOD Tester

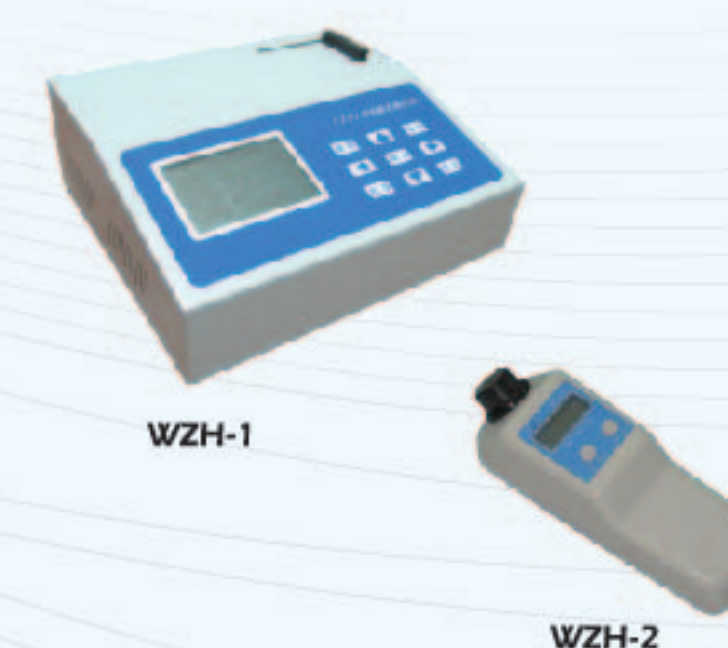


**Application:** CI-B5 BOD Tester is applicable in environmental protection departments to determine the BOD (abbr. of Biochemical Oxygen Demand) of surface water, sewage, industrial wastewater, and it is also suitable to monitor water quality for water management department and public health department.

### Parameters

Measuring range	0~700mg/L(no need to dilute) 700~4000mg/L(need to dilute)
No. of sample bottle	≤6
Power supply	AC220V 50Hz

## WZH Series Lab Turbidimeter



**Application:** WZH Lab Turbidimeter is used to measure turbidity which is a measure of water clarity. It is a perfect partner for education, research, water treatment, wastewater treatment, the test of the surface water and groundwater, industrial process control and product quality control, etc.

**Related Standards:** ISO 7027, JJG 880, etc.

### Parameters

Model No.	WZH-1	WZH-2
Measuring range	0~500NTU	0~200NTU
Resolution	0.001NTU	0.1NTU
Accuracy	≤±5%+0.2NTU	≤±8%
Repeatability	≤±5%+0.2NTU	≤±1%
Power supply	AC220V 50Hz	Dry cell

## YD-200A/B Water Hardness Meter



**Application:** YD-200A/B Water Hardness Meter is used to determine water hardness, which is a measuring of the content of calcium, magnesium ion in water.

### Parameters

Model No.	YD-200A	YD-200B
Measuring range	0~5mg/L	0~500mg/L
Resolution	0.001mg/L	0.01mg/L
Repeatability	≤2%	
Display error	±5%F.S+one digit	
Power supply	AC220V 50Hz	





## YL-1AZ Portable Free Chlorine Meter



**Application:** YL-1AZ Portable Free Chlorine Meter is used to measure the free chlorine ( $Cl_2$ ) content in water samples. It is applicable to water in different water processing factories, swimming pool and other domestic or industrial places where water is used.

### Parameters

Measuring range	0~2.5mg/L
Resolution	0.01mg/L
Repeatability	1%
Linear error	±5%F.S.
Power supply	DC9V

## CM-04-26 Digital Silver Ion Tester



**Application:** CM-04-26 Digital Silver Ion Tester is used to determine the silver ion density in water and waste water for lab use and onsite detection.

### Parameters

Measuring range	0.001~1.00mg/L
Detection limit	0.01mg/L
Relative error	≤±5%
Repeatability	≤±3%
Power supply	Rechargeable battery

## LBS-100B Portable Sludge Concentration Meter



**Application:** LBS-100B Portable Sludge Concentration Meter is used to determine the suspended solids, sludge thickness and turbidity.

### Parameters

Measuring range	0~100mg/L 0~1000mg/L 0~10000mg/L 0~20000mg/L
Resolution	0.01mg/L
Repeatability	≤±1%
Power supply	Rechargeable battery

## TDS-3 Total Dissolved Solids Meter



**Application:** TDS-3 Total Dissolved Solids Meter is used to determine the total dissolved solids in water (mg/L). It is widely used for testing water quality.

### Parameters

Measuring range	0~9990ppm
Accuracy	±2%
Power supply	1.5V×2 dry cell

## FYI Series Laboratory Air Conditioning System



**Application:** FYI Series Laboratory Air Conditioning System is designed for the textile testing laboratories. It can provide an environment of constant temperature and humidity. Various models meet different requirements of different laboratories.

### Features:

#### Quality Control Component

It strictly complies with CE and IEC standards and is empowered with advanced electric control technology and able to work under a power source of 380V

#### Scroll Compressor

The core power of the unit is from Copeland closed scroll compressor that guarantees the high efficiency, low noise and long life of the unit.

#### Evaporator

An efficient evaporator made from quality material with advanced professional technology and featuring large heat exchange area and undisturbed flow.

#### Humidifier

An internationally advanced electrode steam humidification system under which the amount of humidification and water inflow and outflow are all controlled by computer, the auto cleaning program for the humidifier cylinder ensure normal humidification efficiency of the cylinder.

#### Condenser

With an enclosure of anti-corrosion alloy that ensures service life and appearance of the condenser, an external rotor axial flow fan that is elaborately designed and able to satisfy the environmental protection requirements on noise, and a fan speed regulator that controls the rotating speed under different temperature and ensures sound operating effect and energy saving.

## ZS Series Industrial Ultrasonic Humidifier



**Application:** ZS Series Industrial Ultrasonic Humidifier is suitable for fabric, paper making, and working room for computer or electronic production, plastic, printing, tobacco and all kinds of laboratories, planting. It can be widely used in breeding and other industries.

### Parameters

	Humidifying rate				
Control method	1.8kg/h	3kg/h	6kg/h	9kg/h	12kg/h
Switch control	ZS-06	ZS-10	ZS-20	ZS-30	ZS-40
Timer control	ZS-06S	ZS-10S	ZS-20S	ZS-30S	ZS-40S
Humidity control	ZS-06Z	ZS-10Z	ZS-20Z	ZS-30Z	ZS-40Z

## YG751D Constant Temperature and Humidity Chamber



**Application:** YG751D Constant Temperature and Humidity Chamber is used to provide an environment of constant temperature and humidity for various textile materials to condition them before testing.

**Related Standards:** ISO 139, etc.

### Parameters

Model No.	YG751D-125	YG751D-250
Volume of working chamber	125L	250L
Dimensions of working chamber	500×500×500mm	500×500×1000mm
Temperature range	20°C~80°C	
Humidity range	30~98%RH	
Temperature fluctuation	±0.5%	
Humidity fluctuation	-3%RH~+2%	
Testing time	1s~999min99s	
Power supply	AC220V 50Hz	